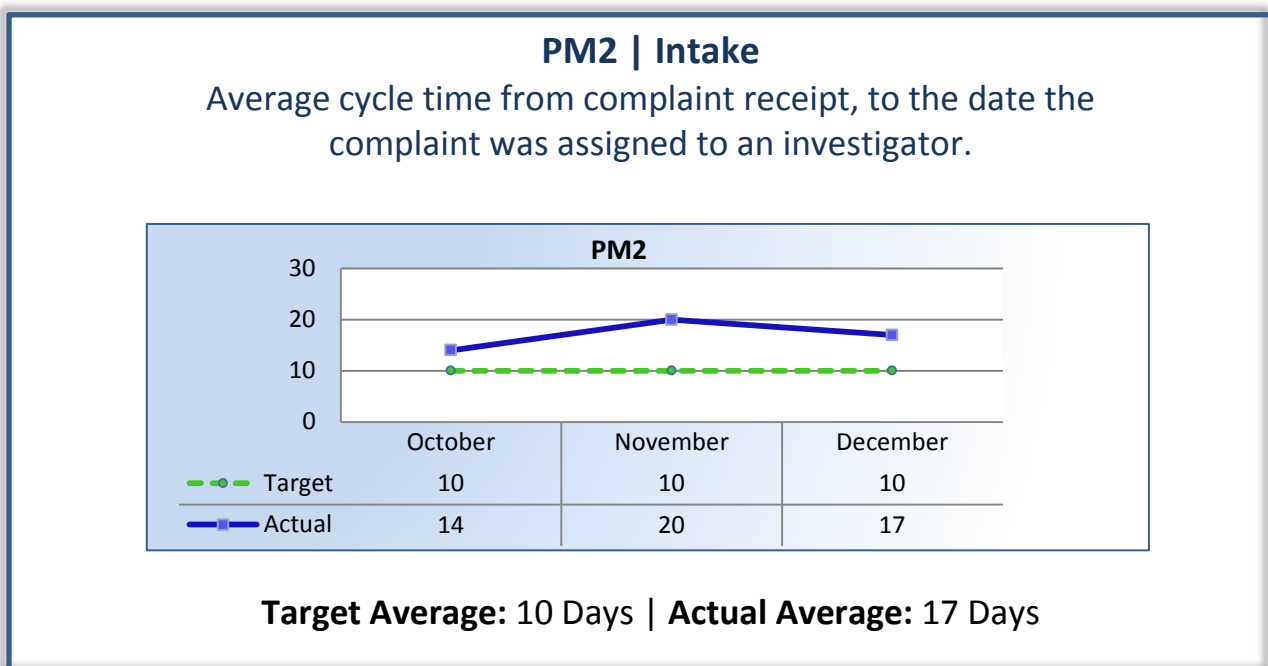
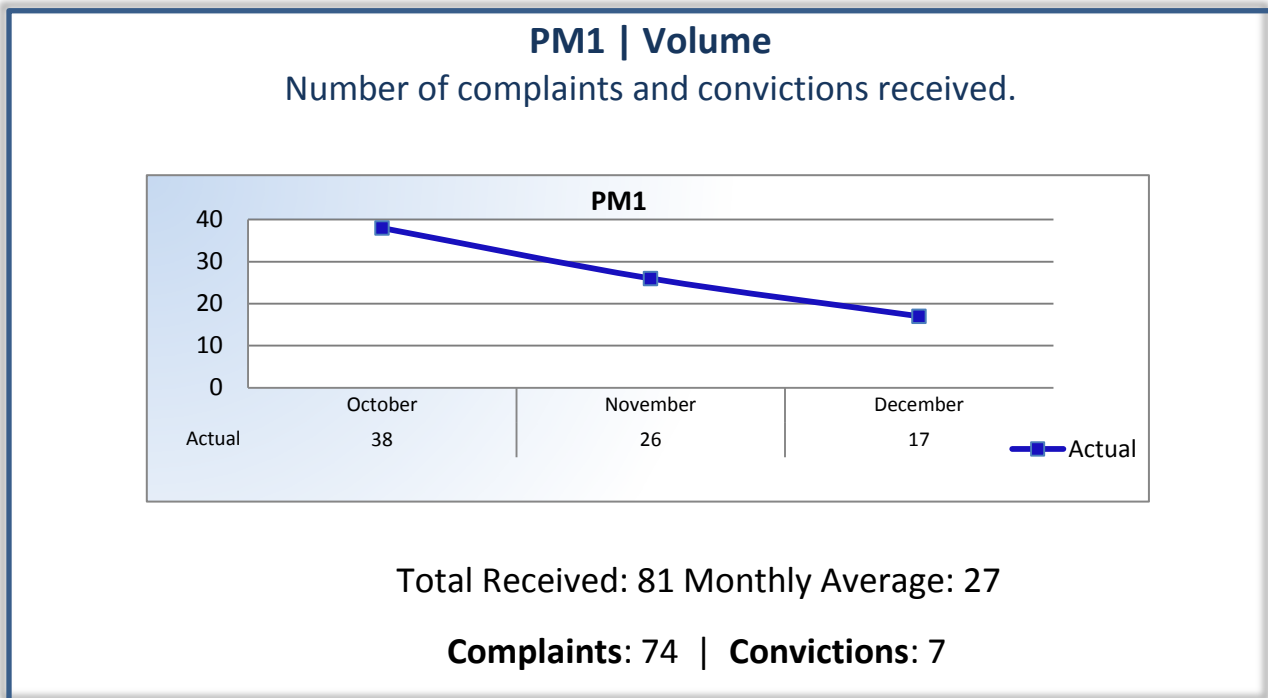


## Performance Measures

### Q2 Report (October - December 2014)

To ensure stakeholders can review the Board's progress toward meeting its enforcement goals and targets, we have developed a transparent system of performance measurement. These measures will be posted publicly on a quarterly basis.



### **PM3 | Intake & Investigation**

Average number of days to complete the entire enforcement process for cases not transmitted to the AG. (Includes intake and investigation)

*Data Currently Unavailable.*

**Target Average:** 150 Days | **Actual Average:** N/A

### **PM4 | Formal Discipline**

Average number of days to complete the entire enforcement process for cases transmitted to the AG for formal discipline. (Includes intake, investigation, and transmittal outcome)

*Data Currently Unavailable.*

**Target Average:** 540 Days | **Actual Average:** N/A

### **PM7 | Probation Intake**

Average number of days from monitor assignment, to the date the monitor makes first contact with the probationer.

*The Board did not contact any new probationers this quarter.*

**Target Average:** 14 Days | **Actual Average:** N/A

### **PM8 | Probation Violation Response**

Average number of days from the date a violation of probation is reported, to the date the assigned monitor initiates appropriate action.

*The Board did not report any new probation violations this quarter.*

**Target Average:** 7 Days | **Actual Average:** N/A